

Image

Affordable, contemporary and fresh, this home stands out for its kerb appeal and offers a perfect blend of style and practicality.



Key features

- Boxed out windows with CanExel cladding detail
- Recessed front door with feature CanExel cladding under a roof dormer
- Vaulted ceilings to the lounge, kitchen and dining areas
- Contemporary fitted kitchen with integrated appliances
- Feature electric fire with recessed shelves either side to the lounge
- Master bedroom with feature wall and en-suite shower room (twin models only)
- Dressing area to the master bedroom with a double and two single wardrobes
- Study and utility available on selected floor plans



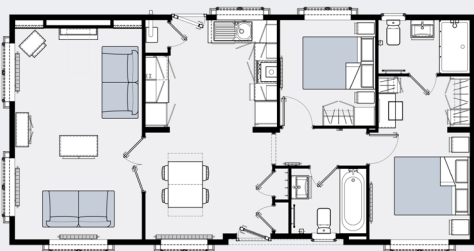
The Image is available in a range of twin and single floor plans which can be adapted to suit your individual needs. The minimum size for this model is 35' x 12' and the maximum size is 65' x 22'.

Scan the QR code to find out more

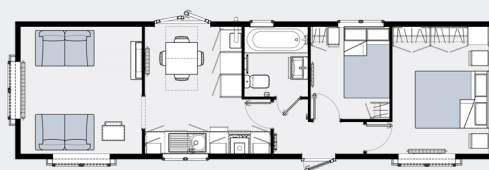


Example floor plans

40' x 20' 2 Bed



40' x 12' 2 Bed



Please note: Decking and props are not included, some photos may include optional extras and specifications and layouts may differ from those shown here. For full details, please contact our sales team.